



**EC ENGINEERING
GROUP**



**EC ENGINEERING
CONSTRUCTION**

COMPANY
PROFILE

2024

Embrace Excellence

www.ecengineering.co.za

01

Let us tell you about our business



We are Experts in Different Solutions

We are experts in different solutions EC Engineering Construction (Pty) Ltd operates as a vital component within the EC Engineering Group, a conglomerate led by EC Engineering cc under the stewardship of Everd Vermeulen, the parent company established in 1994 in Johannesburg.

Originating in mining engineering, particularly the smelter industry, their pioneering efforts addressed the limited lifespan of smelter anodes, resulting in a tenfold extension of their longevity—a testament evident in the sustained success over the past 25 years.

This success spurred the formation of the EC Engineering Group, comprising EC Water Engineering (Pty) Ltd, EC Engineering Construction (Pty) Ltd, and EC Engineering Manufacturing.

Founded in 2014 by Bertus Jansen van Vuuren, EC Engineering Construction (Pty) Ltd, headquartered in Johannesburg, focuses on civil engineering construction. Specializing in industrial pump and compressor base installations and repairs, the company excels in building construction and maintenance, with a notable emphasis on specialized earthworks projects.

What makes us different?

Empowerment

Empowering individuals lies at the core of our corporate commitment. We are dedicated to facilitating the acquisition of expertise and the development of skills within our organization, enabling individuals to realize their utmost potential. Emphasizing the principles of hard work and meritocracy, we firmly believe that success is a product of dedicated effort.

Our commitment to equal opportunities is reflected in our inclusive approach, providing both males and females with the chance to not only enhance their knowledge but also contribute diverse skills and experiences, fostering the continuous growth and success of our business.

Our Vision

At EC Engineering Construction, we envision a workplace where strong work ethics, unwavering trust, and a foundation in God's faith guide our every endeavor. We prioritize the values of family, love, and working with passion, fostering an environment that values both personal and professional growth.

Our commitment to value creation is driven by authenticity, perfection, and the integration of unique technologies with custom design. We specialize in our work, ensuring that every project reflects our dedication to excellence. Time is of the essence, and we strive to deliver exceptional results with a focus on efficiency and precision.

Our Mission

At EC Engineering, our mission is to be a premier construction company, specializing in pump and industrial compressor base installations and repairs, providing expertise in specialized concrete repairs, and excelling in building construction and maintenance.

With a focus on excellence, we undertake specialized earthworks projects, ensuring precision and efficiency in every aspect of our operations. Committed to quality and client satisfaction, we aim to be a trusted partner in delivering innovative solutions across diverse construction fields.

”

Trust and Value

Trust and lasting value define our commitment to client relationships. Our aim is to cultivate enduring partnerships, extending far beyond the completion of the initial project. Recognizing the significance of meticulous planning, we are often engaged in the early stages of project development to proactively mitigate potential technical oversights, thereby minimizing costs and ensuring a seamless execution.



02

What we do best is **our services**

We put the client at the center of all our decisions.

Why The construction sector stands as one of the most substantial industries globally, not only in terms of economic value but also due to its profound impact on our daily lives. Our existence is intricately woven into the fabric of this sector; we reside and work within constructed buildings, traverse infrastructural networks for our daily commutes and leisure travels, and are enveloped by the tangible outcomes of this influential industry.

How The founders and partners of EC Engineering Construction (Pty) Ltd are deeply committed to elevating the construction industry, fostering improvements in sustainability, efficiency, and a return to its foundational professionalism. Our collective passion drives us to establish a distinguished company dedicated to assisting clients in realizing their visions, setting a standard for excellence within the construction sector.

What Fueled by a profound passion for construction, backed by pertinent qualifications, experience, and fortified by an unwavering determination to excel, we embarked on the journey to establish a construction company distinguished for its commitment to quality, exemplary work ethic, and the delivery of exceptional services in infrastructure development.



The secret of change is to focus all your energy not on fighting the old but on building the new.

Our services breakdown

01

Specialized Civil Construction

- Construction of specialized pump basis and industrial compressor basis
- Specialized concrete repairs
- Specialized earthworks



02

Building Construction

- New Building constructions
- Renovations



03

Building Maintenance (Office Blocks, Town Houses, Flat apartments)

- Brick work
- Sewers and plumbing
- Plastering
- Roofing
- Painting
- Ceilings
- Carpentry



03

We are experts, and
our projects
show it



Markspark Installation of Foundations and Pre-cast Walls

Project Specifications

Location

South Africa, Gauteng, Markspark

Project duration

Installation of Foundation and Pre-Cast wall - 3 days

Scope

Remove old fence and replace with a new upgraded pre-cast wall.

Project challenges

- Soil conditions were not suitable
- Construction of pre-cast wall on an unstable embankment

Solutions

- Do a diligent site walk and investigation to understand the terrain
- Provide the client with the best and most cost-effective solution
- Embankment was stabilized with cement and consolidated with roller compactor
- Pre-cast foundations were casted
- Wall panels were put in places



Wilgehewel Office Space Development and Renovations

Project Specifications

Location

South Africa, Gauteng, Wilgehewel

Project duration

The Installation of dry walling to add an additional office space to the clients house - 5 days

Scope

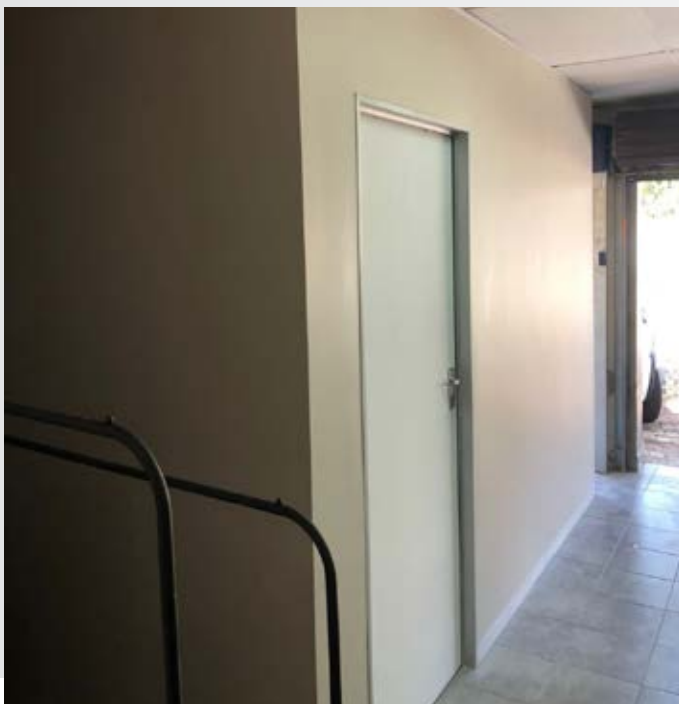
The scope for the project was to add an additional office space to the clients house. The client require electrical points for appliances. The client was looking for a moder style end product.

Project challenges

- The area that was identified had limited working space
- The client requested the project to have a short turn around time due to occupants that wanted to move in

Solutions

- Do a diligent site walk and investigation to understand the building conditions
- Provide the client with the best and most cost-effective solution
- To accommodate the clients short turn around time we opted for a dry wall installation as its cost effective and accommodates the confined space
- The project was executed and handover with in 5 days



Goedgevonden Coal Mine, Earthworks, and Stormwater Construction Project

Project Specifications

Location

South Africa, Mapumulanga, Oogies

Project duration

Stormwater management plan - 2 weeks

Stormwater management design - 2 weeks

Stormwater runoff construction - 1 month

Scope

The assigned project involved the restoration of the railway formation and enhancement of the stormwater runoff system adjacent to the railway line. The existing issue pertains to the stagnation or occasional flooding of stormwater onto the railway line during precipitation events. The client commissioned the development of a comprehensive stormwater management plan and design to effectively divert water away from the railway line, mitigating intermittent flooding and preventing water ponding alongside the rail formation.

Project challenges

- Obtaining layouts of the area
- Unsecure and unsafe working area
- Cost constraints
- Use of in situ materials

Solutions

- Do a diligent site walk and investigation to understand the terrain
- Survey the terrain to develop the contour profile
- Developed three solutions to manage the stormwater runoff
- Provide the client with the best and most cost-effective solution
- Develop a design according to the solution
- Construction according to design with in-situ material provided by the client
- No more flooding or water ponding occurred



Helderfontein Estate House Construction Project

Project Specifications

Location

South Africa, Gauteng, Forwards, Helderfontein Estate

Project duration

Entire project from setting out to client hand over - 16 months

Scope

The assigned project involved the new construction from ground up to the main product where the client can move in. The client wanted a one stop contractor to construct and finish the entire project. Soil samples were obtained to verify Geo-technical conditions which was approved for construction. The project started with the earth works, setting out of the building layout, the foundations.

Project challenges

- To provide the client with the best and most cost-effective solutions
- A very shallow water table
- Blasting of rock for the foundation
- Installation of sub surface drainage in and around the building
- Casting of the foundation
- Construction of retaining wall to support the neighbors perimeter wall to develop a solutions to manage the stormwater runoff for the client

Solutions

- Drawings was provided by a architect and professional engineer
- The site was set out and boundaries was identified
- On site safety was the main objective on-site with a zero percent tolerance to injuries
- Soil samples was obtained and verified by a Geo-technical engineer and was approved
- Chemical blasting was done to get the right foundation levels and to secure a solid foundation
- Sub surface drainage was installed to manage the low water table in the area
- The foundation was constructed on the rock formation
- Wet work (brick work) commenced to the first floor
- Casting of a rib and block slab to secure a safe and stable first floor
- Work was completed to the roof codes and standards in and around the building
- All plumbing and electrical work was completed according to the relevant SANS codes and COC's for Electrical work, plumbing work and gas installations were obtained
- The project was successfully completed within budget and with in the clients time constrains





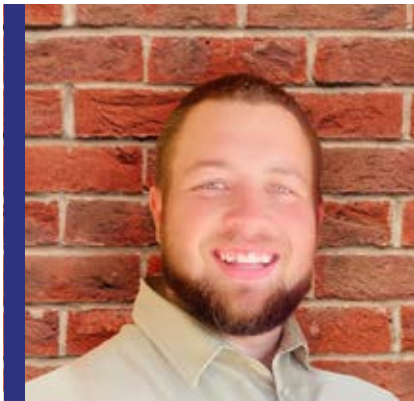
04

Our professional team

”

We provide our clients with a unique accumulation of highly specialised knowledge and experience.

Bertus Jansen van Vuuren



Construction Credentials

National Diploma in Business Management
Project Management Certificate

- He has hands-on experience in managing projects for private homes, estate houses and commercial projects.
- He manages the business daily by working with quantity surveyors, architects, engineers & service departments, doing planning, budgeting, presentations, quotations, managing projects, etc.
- He has excellent entrepreneurial skills such as teamwork, communication, negotiation, business and persistence.

Everd Junior Vermeulen

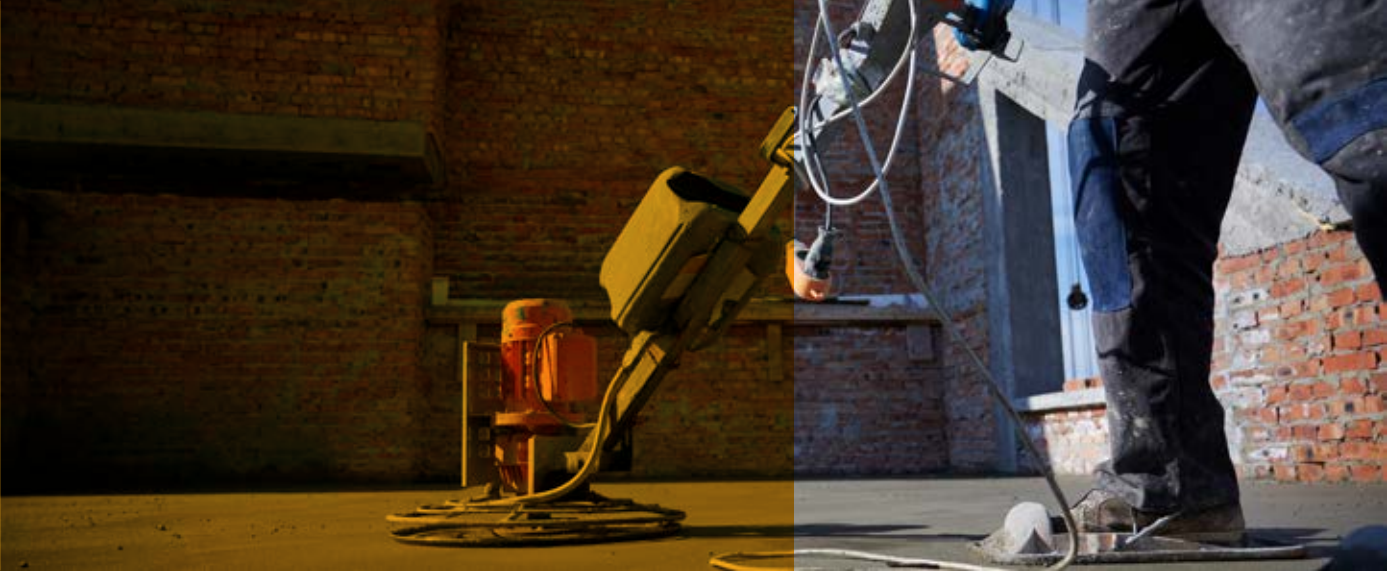


Water Engineering Technologist

Registered member - Engineering Council of South Africa (ECSA)
Associate Member - The South African Institution of Civil Engineering (SAICE)
Associate Member - South African Irrigation Institute (SABI)

Has a decade of work experience in various sectors including; rail engineering, construction, water engineering, mining, metals and petrochemicals. Proven expertise in construction management, engineering management, design, maintenance engineering and troubleshooting with a focus on; irrigation, stormwater, dams, structures, and geotechnical engineering.

- Is driven to extract maximum value from existing assets and resources to improve company bottom line safely and responsibly.
- Has a track record of developing successful solutions to complex problems, sound construction management and effective leadership under pressure.
- Regarded as a creative innovator, with an aptitude for strategic thinking in pursuit of solutions to complex challenges.
- He has a strong practical background.



EC Vermeulen



EC Vermeulen is the founder of EC Engineering cc which was established in 1994 in Johannesburg to primarily serve the mining engineering and particularly the smelter industry with a focus on the anodes used in the smelters where a solution to the limited life span of these anodes was developed that extended the life span tenfold, and the evidence is relevant in the life improvement over the last 25 years.

His considerable experience in mining and underground operations expanded the scope of the business over its lifetime and with his family developed the shared dream of developing the EC Engineering Group that forms the umbrella for EC Water Engineering (Pty Ltd, EC Engineering Construction (Pty) Ltd and EC Engineering Manufacturing.

JJ Vermeulen



JJ Vermeulen has been in the construction industry for the last 45 years and covered various activities within the industries amongst other the following;

- Bridge construction over the Blood River and ancillary earthworks that included a major marshaling yard in Hlobane under the Resident engineer in Vryheid
- Harbours construction and Rail maintenance under the Walvis Bay Harbour engineer
- System breakwater management at the Durban port under Harbours engineer Durban
- Project manager for Racec with rail construction for Phalaborwa mining, Iscor, RBCT maintenance, and construction.
- Founder and Director at LTA Rail construction with various civil and rail construction projects
- Owner and CEO at Econotrack Rail and Econocrete manufacturing of precast products
- Director at Fraser Alexander rail Construction, servicing mainly the Mining Industry.
- GM at Grindrod Rail – established a new company in Mozambique.
- GM at Ikusasa Rail, the Rail division for WHO.



**EC ENGINEERING
CONSTRUCTION**

THANK YOU FOR YOUR BUSINESS

EC ENGINEERING CONSTRUCTION (PTY) LTD
Comp Reg. No. 2023/812023/07
NHBRC Registered

Address: Plot 54, Beckendan, Tarlton, Krugersdorp, Gauteng, South Africa
Phone: +27 82 460 3809
E-mail: info@ecengineering.co.za

www.ecengineering.co.za